



## Building Silver Anodized Aluminium Rectangular Tube with CNC Deep Processing

### Our Product Introduction

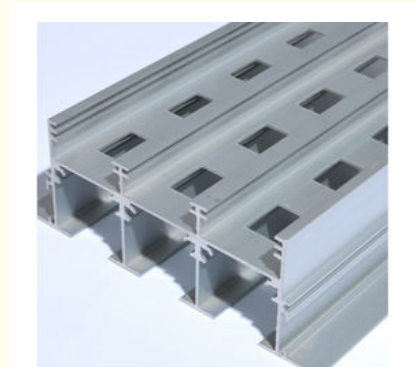
#### Basic Information

- Place of Origin: China
- Brand Name: HT
- Certification: CA ,CE
- Minimum Order Quantity: 1 ton
- Packaging Details: Ep paper ,kraft ,pallet
- Delivery Time: 20days
- Payment Terms: T/T ,L/C
- Supply Ability: 100 000ton each month



#### Product Specification

- Product Name: Aluminum Extrusion Rectangular Tube
- Alloy: 6063,6061,6005
- Material: Aluminum
- Surface Treatment: Mill Finished,Anodized, etc
- Temper: T4, T5, T6 ,T66
- Application: Buildings,commercial,industrial
- Highlight: **extruded aluminum shapes, aluminium profile extrusion**



## Product Description

### Silver Anodized Aluminum Extrusion Rectangular Tube , with CNC Deep Processing

Material:Aluminum

Temper: T4, T5, T6 ,T66

Alloy:6063,6061 ,6005 or according to customer' s choice

Surface Treatment:Mill Finished,Anodized ,Electrophoretic coated,Powder spray coated,Fluorocarbon powder spray coated /PVDF Paint, Drawbench,Steel polished,Wood grain coated /Wooden transfer .

Deep process:Milling, Drilling, Bending,Cutting.

Application:Industry Aluminum profile used in cars, trains machinery ,electronics, medical and other industrial filed . In terms of hardware, machinery, electromechanical parts, solar PV products, aluminum frames are adopt as important auxiliary materials. We also have aluminum profiles for radiators, fitness machinery, buildings, lighting instrument, windpipes, oil pipelines, for instance.

Color:clear, satin, bronze, black, golden, silver, other multicolor

#### Description:

Item	Colored Anodized Aluminum Extrusion Rectangular Tube
Material	Alloy 6063, 6061 or according to customer' s choice
Temper	T3, T4, T5, T6
Surface	Anodize (clear, satin, bronze, black, golden, silver, other multicolor) , electrophoresis, powder coating, PVDF coating, wood grain painting, etc.
MOQ	1 ton. Usually 12 tons for a 20 feet container; 24 tons for a 40 feet container.
Profile type	Industry Aluminum profile used in cars, trains machinery ,trailers ,electronics, medical and other industrial filed .
Machining	1. milling; 2. Drilling; 3. Bending; 4. Cutting ...
Moulding	1. Using our moulds, free; 2. Using customer' s drawing, opening mould fee need to be paid .
Certificate	ISO14001:2004, ISO9001:2000
FOB Port	Shanghai, etc.

#### Factory's extrusion production line and deep processing equipments:

##### Production lines as followings:

25 sets of Extrusion lines:600(5 sets), 800(2), 1000(1), 1250(1), 1800(1), 2500(1).

2 set of Oxygenation Production Line:Length<=6.5m. Supply ability:50-60 Tons/24 hours

1 set of Electrophoresis Production Line:Length<=6.5m.

2 sets of German Wangner Tunnel Static powder Spray Painting Lines:one set length is 13m.

##### Precision processing machines:

5 sets of automatic cutting machine

5 sets of CNC machine

1 sets of polish machine

2 sets of milling machine

5 sets of punching machine

5 sets of tapping machine

1 set of grinding machine

#### Applications:

Industry Aluminum profile used in cars, trains machinery ,electronics, medical and other industrial filed . In terms of hardware, machinery, electromechanical parts, solar PV products, aluminum frames are adopt as important auxiliary materials. We also have aluminum profiles for radiators, fitness machinery, buildings, lighting instrument, windpipes, oil pipelines, for instance.

#### Specifications:

##### 1. Primary Technical Data

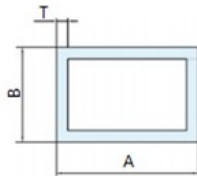
###### 1) Chemical composition

Alloy	Si	Fe	Cu	Mn	Mg	Cr	Zn	Ti	Impurity	Al
6063	0.2-0.6	0.35	0.1	0.1	0.45-0.9	0.1	0.1	0.1	0.15	Rest
6061	0.4-0.8	0.7	0.15-0.4	0.15	0.8-1.2	0.04-0.35	0.25	0.15	0.15	Rest
6060	0.3-0.6	0.1-0.3	0.1	0.1	0.35-0.6	-	0.15	0.1	0.15	Rest
6005	0.6-0.9	0.35	0.1	0.1	0.40-0.6	0.1	0.1	0.1	0.15	Rest

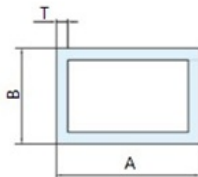
###### 2) Mechanical property

Alloy	Temper	Tensile strength	Yield strength	Elongation
6063	T5	≥ 160Mpa	≥ 110Mpa	≥ 8%
	T6	≥ 205Mpa	≥ 180Mpa	≥ 8%
6061	T6	≥ 265Mpa	≥ 245Mpa	≥ 8%

##### 2. Specifications:



NAME	A(mm)	B(mm)	T(mm)	EST.WEIGHT(kg/m)
L04239	12	12	1.5	0.171
L04184	12.7	12.7	1.65	0.198
L04210	15.88	15.88	1.17	0.187
L04111	16	6	1	0.114
L0435	19	16	1.2	0.228
L04144	19	19	1.55	0.317
L04112	20	6	1	0.148
L04240	20	12	1	0.171
L0451	20	20	1.2	0.245
L0417	20	20	1.8	0.355
L04127	21	15	2	0.346
L0431	22	16.5	1.2	0.253
L0472	22	20	2	0.430
L04206	25	16	2.1	0.418
L0430	25	25	1.2	0.310
L04141	25	25	2	0.524
L0470	25.4	16	1.2	0.263
L04142	25.4	25.4	1.55	0.421
L04126	29	12.5	1.2	0.267
L0480	29	29	1.2	0.390
L04197	30	10	1	0.206
L04207	30	18	2	0.475
L0415	30	20	1.2	0.310
L0415D	30	20	1.5	0.406
L0417	30	20	2	0.499
L04219	30	24.5	2.5	0.668
L04208	30	29	2	0.594
L0461	30	30	1.1	0.345
L0453	30	30	1.5	0.492
L0473	30	30	2	0.635
L04186	30	30	3	0.879
L04200	32	23.5	2	0.556
L04217	32	32	2	0.650
L04155	33.34	25.4	1.59	0.503
L04236	34	15	1.2	0.303
L0426	35	28	1.5	0.488
L04149	35.81	35.81	1.27	0.473
L04220	36.4	20	1.2	0.352
L04235	38	18	1.2	0.349
L0411	38	25	1	0.331
L0408	38	25	1.2	0.394



NAME	A(mm)	B(mm)	T(mm)	EST.WEIGHT(kg/m)
JY1306	60	34	1.2	0.596
L0476	60	40	2.5	1.336
L04260	60	50	3	1.685
L0418	60	60	1.2	0.765
L04225	60	60	1.4	0.889
L04182	60	60	1.8	1.192
L0418D	60	60	2	1.318
L0432	65	25	1.4	0.662
L04139	65	40	1.2	0.701
L0487	65	65	3	2.016
L0444	70	8	1.2	0.531
L0478	70	25	1.2	0.651
L04234	70	30	1.0	0.531
L04175	70	34	1.3	0.714
L04101	70	50	1.2	0.796
L0407	70	65	2	1.420
L0483	72	72	1.4	1.148
L0404	76	25	1.2	0.693
L0404D	76	25	1.4	0.745
L0405	76	44	1.2	0.827
L0405D	76	44	1.4	0.889
L0462	76	44	2	1.648
L04196	76	76	1.4	1.132
L0455	76	76	2	1.685
L04124	76.2	25.4	3	1.554
L04122	78.5	25	1.4	0.791
L04187	80	20	1	0.532
L0423	80	25	1.2	0.667
L0423D	80	25	1.5	0.883
L0490	80	25	2	1.139
L04215	80	40	3	1.854
L0424	80	44	1.2	0.791
L0466	80	44	3	2.039
L04221	80	50	2.5	1.694
L04262	80	50	4	2.635
L0491	80	51	2	1.446
L0477	80	60	2.5	1.900
L04123	80	60	4	3.005
L04185	80	60	4.5	3.196
L04229	80	80	3	2.629
L04227	80	80	5	4.065

#### Competitive Advantage:

- 1) Engineering design and support.
- 2) Aluminium profiles deeply processing:cutting,punching,drilling,milling,and fabricating.
- 3) High Quality system, strictly inspection during production and whole inspection before package.
- 4) Good performance, product warranty for 15 years.



**HENTEC** Hentec Industry Co.,Ltd

+86-13861643436

aluminum@hentec.com.cn

aluminumextrusion-profiles.com

Qinfeng Road No.555 Huashi Town Jiangyin Jiangsu China (mainland) 214421