



OEM Industrial Aluminium Profile , Aluminum Composite Panel Production Line

Our Product Introduction

for more products please visit us on aluminumextrusion-profiles.com

Basic Information

- Place of Origin: China
- Brand Name: HT
- Certification: CA ,CE ,ISO14001:2004, ISO9001:2000
- Minimum Order Quantity: 1 ton
- Packaging Details: Ep paper ,kraft ,pallet
- Delivery Time: 20days
- Payment Terms: T/T ,L/C
- Supply Ability: 100 000ton each month



Product Specification

- Product Name: Industrial Aluminium Profile
- Alloy: 6063
- Material: Aluminum
- Surface Treatment: Mill Finished, Anodized , Electrophoretic Coated, Powder Spray Coated, Drawbench, Steel Polished
- Deep Process: Milling, Drilling, Bending, Cutting
- Temper: T4, T5, T6
- Highlight: **aluminium door frame,
aluminium extruded profiles**

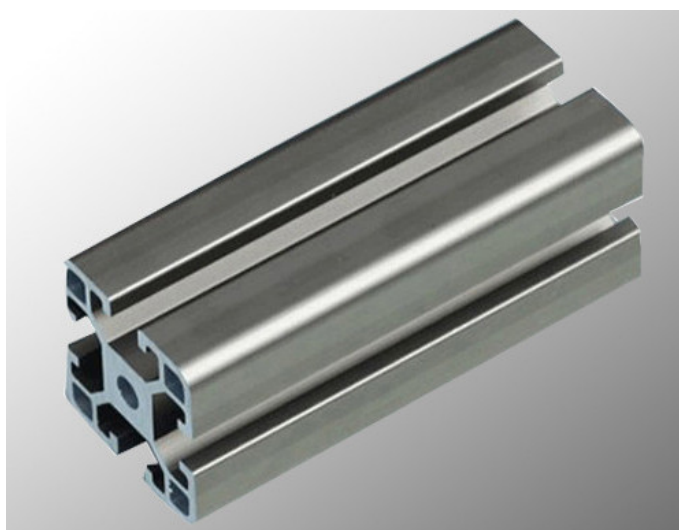
Product Description

OEM Industrial Aluminium Profile , Aluminum Composite Panel Production Line

- (1).Product: aluminium profile
- (2).20 years warranty.
- (3).High corrosion resistance.
- (4).5-10 years weather resistance.
- (5).Good wear resistance & anti-scratch.
- (6).Size customized.

Product Specification

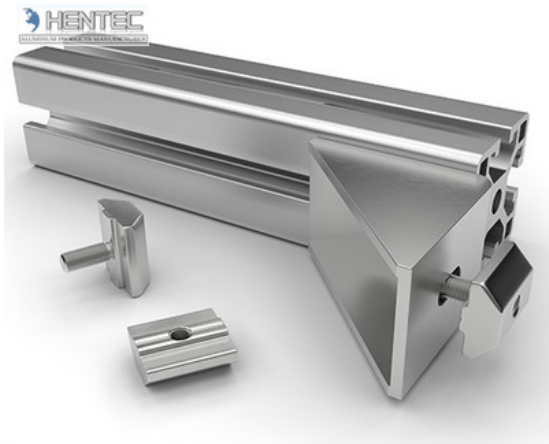
| Item | OEM Industrial Aluminium Profile , Aluminum Assembly Line / Production Line |
|---------------------------|---|
| Material | Aluminium 6000 series alloy, such as 6061, 6063, 6082 etc. |
| Temper | T4, T5, T6 |
| Size | 3m-6m per piece, or customized. |
| Shape | Square, flat, round, hollow, oval, triangle, U-profile, L-profile, T-profile, H-profile, customized available. |
| Surface Treatment | Mill-finish, anodized, powder coated, electrophoresis, wood grain, timber, PVDF paint, polishing, brushed. |
| Color | Silver, champagne, black, bronze, gold, white or customized |
| Application | Window and door with thermal break strips, curtain wall, glass wall, furniture, ceiling, kitchen, LED strip, transportation rail, vehicle, motor housing, machine, tent, solar panel, industrial profile, decoration profile etc. |
| Deep Process | CNC, drilling, milling, cutting, tapping, welding, bending, assembling. |
| MOQ | 500 kgs for each item, usually 13-15 tons for a 20GP, 25-28 tons for a 40HQ. |
| OEM service | Drawing, sample or design service offer by customer. |
| Production Capacity | 2400-3000 Metric tons monthly. |
| Brand Name | HENTEC |
| Certificates and Standard | 1) ISO9001-2008/ISO 9001:2008; 2) CQM CERTIFICATES; 3) SGS, CE, BV, JIS, AS, NZS, QUALICOAT, QUOLANOD AVAILABLE. |
| Guarantee | Surface color can be stable for 10-20 years indoor using. |
| Packing Details | Inside: pack with plastic protective film to protect each piece. Outside: wrap to bundle by waterproof craft paper or EPE film, or customized |
| Delivery time | Die developing and sample testing: 12-18 days . Mass production: 25-30 days after confirming sample by buyer. |
| FOB Port | Shanghai Port |
| Payment Terms | T/T 30% for deposit, balance before delivery. |



- 1.Alloy :6063,6061,6005 or according to customer' s choice
- 2.Material:Aluminum
- 3.Suface Treatment: Mill Finished,Anodized ,Electrophoretic coated,Powder spray coated,Fluorocarbon powder spray coated /PVDF Paint, Drawbench,Steel polished,Wood grain coated /Wooden transfer .
- 4.Deep process: Milling, Drilling, Bending,Cutting.
- 5.Application:
Industry Aluminum profile used in cars, trains machinery ,electronics, medical and other industrial filed . In terms of hardware, machinery, electromechanical parts, solar PV products, aluminum frames are adopt as important auxiliary materials. We also have aluminum profiles for radiators, fitness machinery, buildings, lighting instrument, windpipes, oil pipelines, for instance.
- 6.Color:clear, satin, bronze, black, golden, silver, other multicolor
- 7.Temper: T4, T5, T6 ,T66

Applications:

Industry Aluminum profile used in cars, trains machinery ,electronics, medical and other industrial filed . In terms of hardware, machinery, electromechanical parts, solar PV products, aluminum frames are adopt as important auxiliary materials. We also have aluminum profiles for radiators, fitness machinery, buildings, lighting instrument, windpipes, oil pipelines, for instance.



Specifications:

1.Primary Technical Data

1)Chemical composition

| Alloy | Si | Fe | Cu | Mn | Mg | Cr | Zn | Ti | Impurity | Al |
|-------|---------|---------|----------|------|----------|-----------|------|------|----------|------|
| 6063 | 0.2-0.6 | 0.35 | 0.1 | 0.1 | 0.45-0.9 | 0.1 | 0.1 | 0.1 | 0.15 | Rest |
| 6061 | 0.4-0.8 | 0.7 | 0.15-0.4 | 0.15 | 0.8-1.2 | 0.04-0.35 | 0.25 | 0.15 | 0.15 | Rest |
| 6060 | 0.3-0.6 | 0.1-0.3 | 0.1 | 0.1 | 0.35-0.6 | - | 0.15 | 0.1 | 0.15 | Rest |
| 6005 | 0.6-0.9 | 0.35 | 0.1 | 0.1 | 0.40-0.6 | 0.1 | 0.1 | 0.1 | 0.15 | Rest |

2)Mechanical property

| Alloy | Temper | Tensile strength | Yield strength | Elongation |
|-------|--------|------------------|----------------|------------|
| 6063 | T5 | ≥ 160Mpa | ≥ 110Mpa | ≥ 8% |
| | T6 | ≥ 205Mpa | ≥ 180Mpa | ≥ 8% |
| 6061 | T6 | ≥ 265Mpa | ≥ 245Mpa | ≥ 8% |

| 公司图号 | 图 样 | 线密度 kg/m | 公司图号 | 图 样 | 线密度 kg/m |
|--------|-----|-------------|--------|-----|-------------|
| HT-745 | | 1.292 | HT-752 | | 1.646 |
| HT-746 | | 0.786 | HT-753 | | 2.952 |
| HT-747 | | 2.524 | HT-754 | | 2.015 |
| HT-749 | | 0.464 | HT-767 | | 1.522 |
| HT-750 | | 0.808 | | | |
| HT-751 | | 1.616 | | | |

Competitive Advantage:

- 1)Engineering design and support.
- 2)Aluminum profiles deeply processing:cutting,punching,drilling,milling,and fabricating.
- 3)High Quality system, strictly inspection during production and whole inspection before package.
- 4)Good performance, product warranty for 15 years.



