



Silvery Anodized extruded aluminium profiles For Production Line

Our Product Introduction

Basic Information

- Place of Origin: China
- Brand Name: HT
- Certification: CA ,CE ,ISO14001:2004, ISO9001:2000
- Minimum Order Quantity: 1 ton
- Packaging Details: Ep paper ,kraft ,pallet
- Delivery Time: 20days
- Payment Terms: T/T ,L/C
- Supply Ability: 100 000ton each month



Product Specification

- Product Name: Industrial Aluminium Profile
- Alloy: 6063
- Material: Aluminium
- Surface Treatment: Fluorocarbon Powder Spray Coated /PVDF Paint
- Deep Process: Milling, Drilling, Bending,Cutting
- Temper: T5, T6
- Highlight: **modular aluminium profile system,
custom aluminum extrusions**

Product Description

Silver Mill Finish Extruded Aluminium Sections , Aluminum Assembly Line / Production Line

Description:

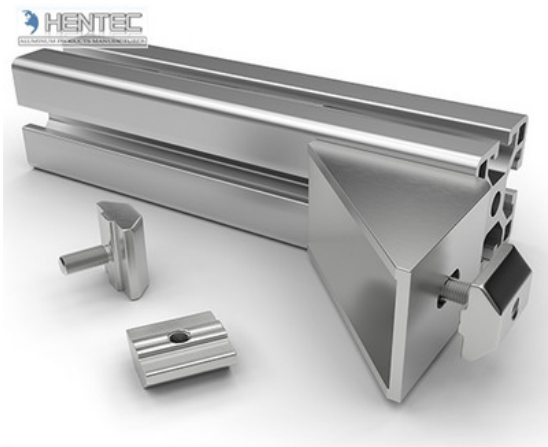
1. Material: 6063,6061,6060,6005,6005A,etc.
2. Temper: T5 or T6
3. Finish: Mill finish, anodizing, powder coating, electrophoresis, wooden transfer or pvdf/carbon-flouride coated, polishing, brushing, sand blasting
4. Various colors: Silver, bronze, black, gold, blue, grey, champagne, bright, etc.
5. Machining: Cutting, punching, drilling, tapping, milling, bending, welding, CNC etc.A
6. Various in styles and sizes:
 - A) Aluminum alloy bars: 6000 series, normal material such as 6063,6005,6061,6060, special materials such as 6082 etc.
 - B) Aluminum profiles:
 - General aluminum profiles (various shapes of pipes/tubes, angles, T or U shapes etc.)
 - Industrial aluminum profiles (TV frames, Rim for bicycles and motorcycles, Heat sink profiles, Furniture, Ladder, Guide Rail, Leisure materials, Shower Room, Solar Module Frame, Motor Shell, Pipeline Integration etc.)
 - Construction aluminum profiles (Aluminum doors& windows, Sliding Windows, JB50A Door Window, Curtain Wall Frame etc.)
7. Certification: ISO9001,SGS,ROHS,TUV
8. Strong technical development ability, can provide high intensity and high ductility aluminum profiles, to meet customers' different requirements.
9. OEM service available, customized design available
10. Surface available: Mill finish, Anodized, Powder Coating, Wooden transferring, electrophoresis, heat insulation, PVDF, and deep processing
11. Certificate: ISO9001, ISO14001

| | |
|--------------------------|---|
| Item | Aluminium Assembling Line Profile |
| Aluminium alloy | 6063,6061,6005 etc |
| Temper | T4 T5 T6 |
| Thickness | General profiles thickness: 0.8 - 5.0 mm Anodized protection thickness: 8 - 25 um Powder coating color thickness: 40 - 120 um |
| Length | 3m to 6m per piece, custom |
| Shape | square, flat, round, hollow, oval, triangle, U-profiles, L-profiles, T-profiles, H-profiles, custom |
| Finishing | mill, anodized, powder coated, electrophoresis, wood grain, timber, PVDF paint, polish, brushed |
| Color | Metal silver, champagne, black, white, mirror, custom |
| Application | windows and doors, curtain walls, glass wall, furniture, ceiling, kitchen, LED strip, vehicles, motor housing, machine, tent, solar. Industrial profile, decoration profile |
| Deep Process | CNC, drilling, milling, cutting, welding, bending, assembling |
| Production Capacity | 500 tons monthly |
| Certificate and Standard | ISO9001-2008/ISO 9001:2008 CQM Certification SGS, CE, BV, JIS, AS, NZS, QUALICOAT, QUOLANOD available |
| Guarantee | Surface color can be stable for 10~20 years indoor using |



Applications:

Industry Aluminum profile used in cars, trains machinery ,electronics, medical and other industrial filed . In terms of hardware, machinery, electromechanical parts, solar PV products, aluminum frames are adopt as important auxiliary materials. We also have aluminum profiles for radiators, fitness machinery, buildings, lighting instrument, windpipes, oil pipelines, for instance.



Specifications:

1.Primary Technical Data

1)Chemical composition

| Alloy | Si | Fe | Cu | Mn | Mg | Cr | Zn | Ti | Impurity | Al |
|-------|---------|---------|----------|------|----------|-----------|------|------|----------|------|
| 6063 | 0.2-0.6 | 0.35 | 0.1 | 0.1 | 0.45-0.9 | 0.1 | 0.1 | 0.1 | 0.15 | Rest |
| 6061 | 0.4-0.8 | 0.7 | 0.15-0.4 | 0.15 | 0.8-1.2 | 0.04-0.35 | 0.25 | 0.15 | 0.15 | Rest |
| 6060 | 0.3-0.6 | 0.1-0.3 | 0.1 | 0.1 | 0.35-0.6 | - | 0.15 | 0.1 | 0.15 | Rest |
| 6005 | 0.6-0.9 | 0.35 | 0.1 | 0.1 | 0.40-0.6 | 0.1 | 0.1 | 0.1 | 0.15 | Rest |

2)Mechanical property

| Alloy | Temper | Tensile strength | Yield strength | Elongation |
|-------|--------|------------------|----------------|------------|
| 6063 | T5 | ≥ 160Mpa | ≥ 110Mpa | ≥ 8% |
| | T6 | ≥ 205Mpa | ≥ 180Mpa | ≥ 8% |
| 6061 | T6 | ≥ 265Mpa | ≥ 245Mpa | ≥ 8% |

| 公司图号 | 图 样 | 线密度 kg/m |
|--------|-----|-------------|
| HT-745 | | 1.292 |
| HT-746 | | 0.786 |
| HT-747 | | 2.524 |
| HT-749 | | 0.464 |
| HT-750 | | 0.808 |
| HT-751 | | 1.616 |

| 公司图号 | 图 样 | 线密度 kg/m |
|--------|-----|-------------|
| HT-752 | | 1.646 |
| HT-753 | | 2.952 |
| HT-754 | | 2.015 |
| HT-767 | | 1.522 |
| | | |
| | | |

Competitive Advantage:

- 1) Engineering design and support.
- 2) Aluminum profiles deeply processing: cutting, punching, drilling, milling, and fabricating.
- 3) High Quality system, strictly inspection during production and whole inspection before package.
- 4) Good performance, product warranty for 15 years.

 **HENTEC** Hentec Industry Co.,Ltd

 +86-13861643436

 aluminum@hentec.com.cn

 aluminumextrusion-profiles.com

Qinfeng Road No.555 Huashi Town Jiangyin Jiangsu China (mainland) 214421