



## Powder Painting Aluminum Window Extrusion Profiles For Meeting Room

Our Product Introduction

for more products please visit us on [aluminumextrusion-profiles.com](http://aluminumextrusion-profiles.com)

### Basic Information

- Place of Origin: China
- Brand Name: HT
- Certification: CA ,CE
- Minimum Order Quantity: 1 ton
- Packaging Details: EP Paper ,kraft and pallet
- Delivery Time: 20days
- Payment Terms: T/T or L/C
- Supply Ability: 100 000 ton each month



### Product Specification

- Product Name: Aluminum Window Extrusion Profiles
- Alloy: 6063,6061
- Material: Aluminum Alloy
- Surface Treatment: Mill Finished,Anodized ,Electrophoretic Coated,Powder Spray Coated
- Deep Process: Milling, Drilling, Bending,Cutting
- Temper: T4, T5, T6
- Highlight: **aluminum extrusion profiles,  
extruded aluminium profiles**

## Product Description

### Anodized / Powder Painting Aluminum Window Extrusion Profiles For Meeting Room , Aluminum Extrusion Profiles

1. Material: Aluminium alloy 6063, 6061.
2. Temper: T5, T6.
3. Quality standard: DIN; AAMA; AS/NZS; CHINAGB.
4. Surface treatment: Mill finish, anodized, powder coated, wood grain, polished, brushed, electrophoresis, etc.
5. Color available: Anyone is available based on your color samples.
6. Packing details: Shrinking film; Plastic & kraft paper; Wooden pallet  
Carton packing; By customer's requirements.
7. Samples Time: Normally, 2-3 weeks.
8. Delivery: 25-30 days for mass production.
9. Production Capacity: 6000MT/Month
10. MOQ: It's based on the drawings. Basically, it's 2 tons.
11. Port: Shanghai ; As per requested.

#### Description:

#### Technical requirements

- 1) Standard: GB/75237-2004, Q/320281/PDWD-2008
- 2) Certification: ISO9001
- 3) OEM service offered
- 4) Material: Alloy 6063, 6061 or according to customer' s choice  
Temper: T4, T5, T6,T66
- 5) Fabrication: 1. Milling; 2. Drilling; 3. Bending; 4. Cutting...
- 6) Window Accessories: Using ECO friendly EPDM leather strap that would not age for a long time with a long service life.
- 7) MOQ: 1 ton. Usually 12 tons for a 20 feet container; 24 tons for a 40 feet container.
- 8) FOB Port: Shanghai Port

#### Applications:

Used in casement doors and windows for living room, dinner room, bathroom, office room, meeting room, restaurant, hotel, etc.

#### Specifications:

##### 1.Primary Technical Data

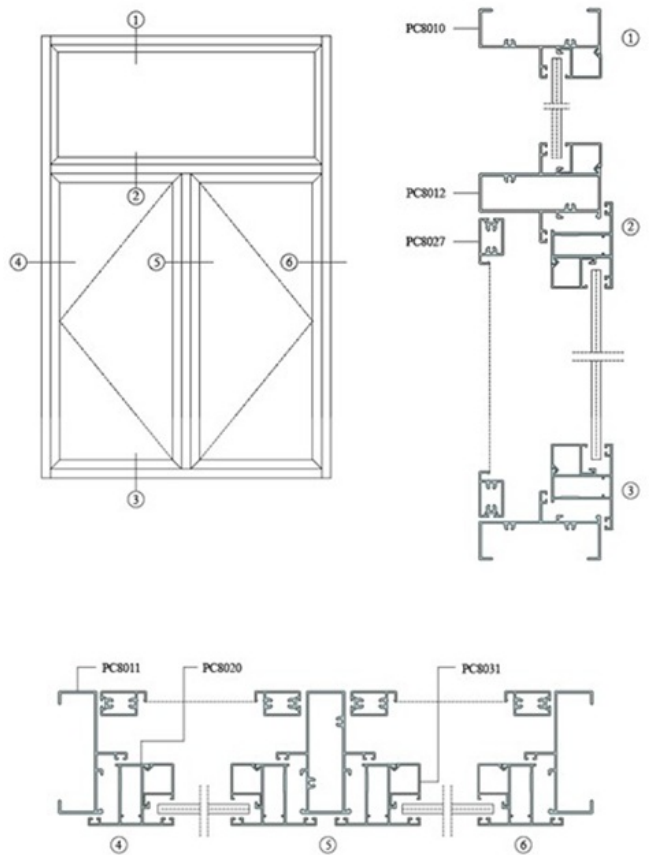
###### 1)Chemical composition

Alloy	Si	Fe	Cu	Mn	Mg	Cr	Zn	Ti	Impurity	Al
6063	0.2-0.6	0.35	0.1	0.1	0.45-0.9	0.1	0.1	0.1	0.15	Rest
6061	0.4-0.8	0.7	0.15-0.4	0.15	0.8-1.2	0.04-0.35	0.25	0.15	0.15	Rest
6060	0.3-0.6	0.1-0.3	0.1	0.1	0.35-0.6	-	0.15	0.1	0.15	Rest
6005	0.6-0.9	0.35	0.1	0.1	0.40-0.6	0.1	0.1	0.1	0.15	Rest

###### 2)Mechanical property

Alloy	Temper	Tensile strength	Yield strength	Elongation
6063	T5	≥ 160Mpa	≥ 110Mpa	≥ 8%
	T6	≥ 205Mpa	≥ 180Mpa	≥ 8%
6061	T6	≥ 265Mpa	≥ 245Mpa	≥ 8%

##### 2. Specifications :



#### Competitive Advantage:

1. 22 years' experiences of manufacturing, 12 years' exporting experiences .
2. STRONG R&D: Help customers finalize the design, strong tool design ability,excellent pressing and surface treatment technology.
- 3.Strict quality management: ISO Administration system.
4. 24 hours on-line communication.Professional, Patient, Flexible.
5. High capacity of manufacturing and wide range of products.
6. Be able to provide secondary fabricating.
7. Small order is accepted.
8. Be able to provide one-stop supply solution.
9. Multiple payment methods: TT, LC.



**HENTEC** Hentec Industry Co.,Ltd

+86-13861643436    aluminum@hentec.com.cn    aluminumextrusion-profiles.com

Qinfeng Road No.555 Huashi Town Jiangyin Jiangsu China (mainland) 214421