



## OEM Extruded Aluminium Profile System / Aluminum Composite Panel

Our Product Introduction

for more products please visit us on [aluminumextrusion-profiles.com](http://aluminumextrusion-profiles.com)

### Basic Information

- Place of Origin: China
- Brand Name: HT
- Certification: CA ,CE ,ISO14001:2004, ISO9001:2000
- Minimum Order Quantity: 1 ton
- Packaging Details: Ep paper ,kraft ,pallet
- Delivery Time: 20days
- Payment Terms: T/T ,L/C
- Supply Ability: 100 000ton each month



### Product Specification

- Product Name: Industrial Aluminium Profile
- Alloy: 6063, 6061
- Material: Aluminum
- Surface Treatment: Mill Finished, Anodized Powder Coated, Drawbench, Steel Polished
- Deep Process: Milling, Drilling, Cutting
- Temper: T5, T6
- Highlight: **modular aluminium profile system, aluminium extrusion frame system**

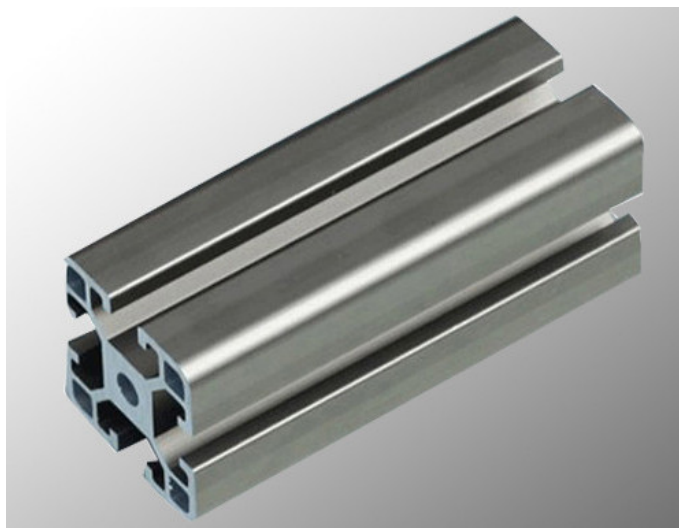
## Product Description

### OEM extruded aluminum profiles / Aluminum Composite Panel Production Line

We have Germany imported machines and professional engineers. In this case, we can do high technics customized aluminium alloy extrusion and profile as per your drawings or samples.

### Product Specification

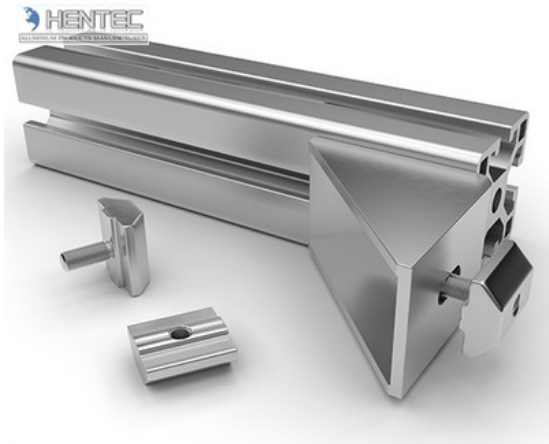
Item	OEM Industrial Aluminium Profile , Aluminum Composite Panel Production Line / Assembly Line
Material	Aluminium 6000 series alloy, such as 6061, 6063, 6082 etc.
Temper	T4, T5, T6
Size	3m-6m per piece, or customized.
Shape	Square, flat, round, hollow, oval, triangle, U-profile, L-profile, T-profile, H-profile, customized available.
Surface Treatment	Mill-finish, anodized, powder coated, electrophoresis, wood grain, timber, PVDF paint, polishing, brushed.
Color	Silver, champagne, black, bronze, gold, white or customized
Application	Window and door with thermal break strips, curtain wall, glass wall, furniture, ceiling, kitchen, LED strip, transportation rail, vehicle, motor housing, machine, tent, solar panel, industrial profile, decoration profile etc.
Deep Process	CNC, drilling, milling, cutting, tapping, welding, bending, assembling.
MOQ	500 kgs for each item, usually 13-15 tons for a 20GP, 25-28 tons for a 40HQ.
OEM service	Drawing, sample or design service offer by customer.
Production Capacity	2400-3000 Metric tons monthly.
Brand Name	HENTEC
Certificates and Standard	1) ISO9001-2008/ISO 9001:2008; 2) CQM CERTIFICATES; 3) SGS, CE, BV, JIS, AS, NZS, QUALICOAT, QUOLANOD AVAILABLE.
Guarantee	Surface color can be stable for 10-20 years indoor using.
Packing Details	Inside: pack with plastic protective film to protect each piece. Outside: wrap to bundle by waterproof craft paper or EPE film, or customized
Delivery time	Die developing and sample testing: 12-18 days . Mass production: 25-30 days after confirming sample by buyer.
FOB Port	Shanghai Port
Payment Terms	T/T 30% for deposit, balance before delivery.



1. Material: 6063, 6061, 6060, etc.
2. Temper: T5 or T6
3. Finish: Mill finish, anodizing, powder coating, electrophoresis, wooden transfer or pvdf/carbon-fluoride coated, polishing, brushing, sand blasting
4. Various colors: Silver, bronze, black, gold, blue, grey, champagne, bright, etc.
5. Machining: Cutting, punching, drilling, tapping, milling, bending, welding, CNC etc.
6. Various in styles and sizes:
  - A) Aluminum alloy bars: 6000 series, normal material such as 6063, 6005, 6061, 6060, special materials such as 6082 etc.
  - B) Aluminum profiles:
    - General aluminum profiles (various shapes of pipes/tubes, angles, T or U shapes etc.)
    - Industrial aluminum profiles ( TV frames, Rim for bicycles and motorcycles, Heat sink profiles, Furniture, Ladder, Guide Rail, Leisure materials, Shower Room, Solar Module Frame, Motor Shell, Pipeline Integration etc.)
    - Construction aluminum profiles
7. Certification: ISO9001, SGS, ROHS, TUV
8. Strong technical development ability, can provide high intensity and high ductility aluminum profiles, to meet customers' different requirements.

## Applications:

Industry Aluminum profile used in cars, trains machinery ,electronics, medical and other industrial filed . In terms of hardware, machinery, electromechanical parts, solar PV products, aluminum frames are adopt as important auxiliary materials. We also have aluminum profiles for radiators, fitness machinery, buildings, lighting instrument, windpipes, oil pipelines, for instance.



## Specifications:

### 1. Primary Technical Data

#### 1)Chemical composition

Alloy	Si	Fe	Cu	Mn	Mg	Cr	Zn	Ti	Impurity	Al
6063	0.2-0.6	0.35	0.1	0.1	0.45-0.9	0.1	0.1	0.1	0.15	Rest
6061	0.4-0.8	0.7	0.15-0.4	0.15	0.8-1.2	0.04-0.35	0.25	0.15	0.15	Rest
6060	0.3-0.6	0.1-0.3	0.1	0.1	0.35-0.6	-	0.15	0.1	0.15	Rest
6005	0.6-0.9	0.35	0.1	0.1	0.40-0.6	0.1	0.1	0.1	0.15	Rest

#### 2)Mechanical property

Alloy	Temper	Tensile strength	Yield strength	Elongation
6063	T5	≥ 160Mpa	≥ 110Mpa	≥ 8%
	T6	≥ 205Mpa	≥ 180Mpa	≥ 8%
6061	T6	≥ 265Mpa	≥ 245Mpa	≥ 8%

公司图号	图 样	线密度 kg/m	公司图号	图 样	线密度 kg/m
HT-745		1.292	HT-752		1.646
HT-746		0.786	HT-753		2.952
HT-747		2.524	HT-754		2.015
HT-749		0.464	HT-767		1.522
HT-750		0.808			
HT-751		1.616			

#### Competitive Advantage:

- 1) Engineering design and support.
- 2) Aluminum profiles deeply processing:cutting,punching,drilling,milling,and fabricating.
- 3) High Quality system, strictly inspection during production and whole inspection before package.
- 4) Good performance, product warranty for 15 years.

 **HENTEC** Hentec Industry Co.,Ltd

☎ +86-13861643436    ✉ aluminum@hentec.com.cn    🌐 aluminumextrusion-profiles.com

Qinfeng Road No.555 Huashi Town Jiangyin Jiangsu China (mainland) 214421