

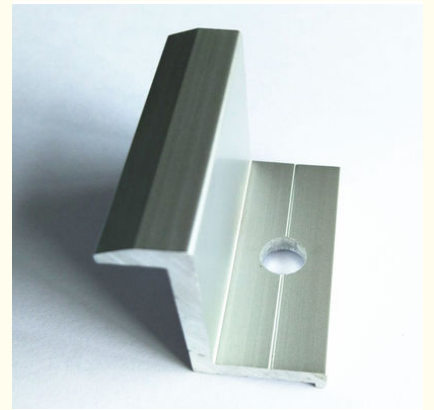


## High Intensity End Clamp For Solar Roof Mounting System With Anodized Surface

Our Product Introduction

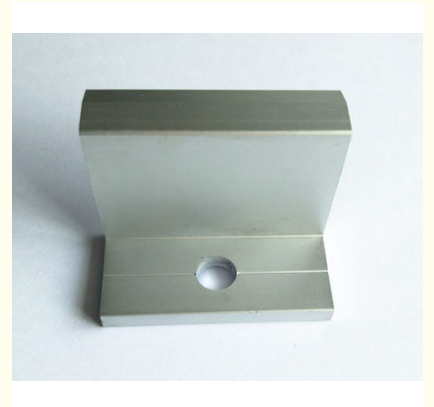
### Basic Information

- Place of Origin: China
- Brand Name: HT
- Certification: CA , CE
- Model Number: HENTEC rail splice
- Application: buildings,commercial,industrial
- Temper: T4, T5, T6 ,T66
- Surface Treatment: Mill Finished,Anodized etc
- Material: Aluminum
- Alloy: 6063,6061,6005
- Product Name: Aluminum Curtain Wall Profile



### Product Specification

- Highlight: **solar panel roof mounts, aluminum frames for solar panels**



for more products please visit us on [aluminumextrusion-profiles.com](http://aluminumextrusion-profiles.com)

## Product Description

### High Intensity End Clamp For Solar Roof Mounting System With Anodized Surface

#### Specifications solar end clamp

1. Aluminium 6005-T5
  2. Tilt-in nut easy install
  3. 7-10 days fast delivery
  4. AS/NZS 1170 Standard
  5. Material AL6005-T5 & SUS 304 bolt
  6. High class anodized aluminium
- Solar framed panel mounting end clamp

Solar Clamp	
End Clamp (Fix 35mm/40mm/45mm/50mm solar panel frame)	
Item NO	Specification
HT35	End Clamp 35mm
HT40	End Clamp 40mm
HT45	End Clamp 45mm
HT50	End Clamp 50mm

#### Order,payment,terms,shipment

- 1, Minimum order:500pcs per trial order .Free sample is available .
- 2, Free sample is available . ( Before sending the samples to customer, samples should pass strict test in our lab. )
- 3,Production Lead time: it depends on customers' order quantity .

#### Features of mounting system

1. Widely Application  
The structure is 100% made of anodized aluminum/galvanized steel,with the quality of corrosion-resistance,light-weight andstrong intensity. It can be used in extremely bad installation condition.
2. Strong Compatibility  
The structure can not only fit for different PV kits, but also work with different PV arrangements which can be interchange randomly.
3. Safety and Reliability  
Load-bearing,wind resistance and seismic resistance has been given sufficient consideration. All of these functions have been tested extremely, which will ensure the safety of the system.
4. Easy Installation  
Most of the parts can be pre-assembled on factory, which not only can to save your install time, but also your cost.
5. Flexibility  
Considering the construction error, the structure has been well-design that make it can adjust flexibly.
6. Warranty  
10-year warranty for the mounting system and 25 years service time.

#### Mounting Parts OEM

OEM parts	application
middle clamp with rubber	for modules connection
end clamp with rubber	for module connection
hook	for tile roof connection
up-right bracket	for corrugated metallic roof connection
joint bracket	for corrugated metallic roof connection
double-thread screw bracket	for corrugated metallic roof connection
rails	as rails
purline	ground mounting system
beam	ground mounting system
ground screw	ground mounting system
steel pile	ground mounting system

#### Specifications:

##### 1. Primary Technical Data

##### 1) Chemical composition

Alloy	Si	Fe	Cu	Mn	Mg	Cr	Zn	Ti	Impurity	Al
6063	0.2-0.6	0.35	0.1	0.1	0.45-0.9	0.1	0.1	0.1	0.15	Rest
6061	0.4-0.8	0.7	0.15-0.4	0.15	0.8-1.2	0.04-0.35	0.25	0.15	0.15	Rest
6060	0.3-0.6	0.1-0.3	0.1	0.1	0.35-0.6	-	0.15	0.1	0.15	Rest
6005	0.6-0.9	0.35	0.1	0.1	0.40-0.6	0.1	0.1	0.1	0.15	Rest

##### 2) Mechanical property

Alloy	Temper	Tensile strength	Yield strength	Elongation
6063	T5	≥ 160Mpa	≥ 110Mpa	≥ 8%
	T6	≥ 205Mpa	≥ 180Mpa	≥ 8%

6061	T6	≥ 265Mpa	≥ 245Mpa	≥ 8%
------	----	----------	----------	------

### 3. Surface Treatment of Sections

(Class)	(μm), not diminish than		acid-resistant			abrasion resistance
	(Min-average film thickness)	(Min-part film thickness)	CASS		(S)	(f, g /μm)
			(h)	Class		
AA10	10	8	16	≥9	≥50	≥300
AA15	15	12	32	≥9	≥75	≥300
AA20	20	16	56	≥9	≥100	≥300
AA25	25	20	72	≥9	≥125	≥300



Hentec Industry Co.,Ltd



Hentec Industry Co.,Ltd



**Competitive Advantage:**

1. Easy installation
2. Wide application
3. High quality solar clamps
4. Fast Delivery
5. Customized designed offer

#### FAQ For Saving Your Precious Time!

Q1: What's the thickness for anodizing?Can you do 15um?

A: Our normal thickness is about 10 um.Yes, we can do 15um and above.

Q2: What color you can do for powder coating?The thickness for powder coat?

A:We can do any color for powder coat as long as you can provide the color sample.Our normally powder coating thickness is 60-80um.

Q3: What color you can do for wood grain?

A: Our most popular colors are Western Red Cedar, Australia Cedar, Jarrah I, Jarrah II, Chestnut, Bush Cherry, Bush Wood, Western Wood, Snow Gum, etc.If you need any other colors, we can do according to the color samples you provide.

Q4: How's the weather resistance for wood grain finish D1010?

A: (1). Powder: Akzo Noble Interpon D1010.

(2). Wood grain film: Italian Memphis.

(3). Standard complied: American AAMA Standard.2603

(4). UV test: 1000 hours.

(5). Salt spraying test: 1000 hours.

(6). Normal weather: 10 years color guarantee.

Q5: What certification do you have?What's your standard?

A: We have ISO certification.Our standard is DIN, AAMA, AS/NZS, China GB.

Q6: What's the delivery time for samples and mass production?

A: (1). 2-3 weeks to make the new moulds and make free samples.

(2). 3-4 weeks after receipt of deposit and confirmation of the order.



 +86-13861643436

 aluminum@hentec.com.cn

 aluminumextrusion-profiles.com

Qinfeng Road No.555 Huashi Town Jiangyin Jiangsu China (mainland) 214421