



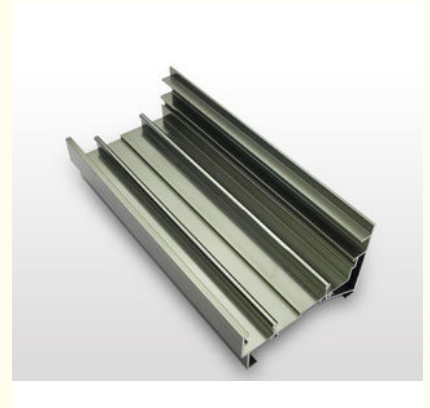
Powder Painted Industrial Aluminium Profile Electrical Cover / Shell / Electronic Cover

Our Product Introduction

for more products please visit us on aluminumextrusion-profiles.com

Basic Information

- Place of Origin: China
- Brand Name: Hentec
- Certification: SGS
- Minimum Order Quantity: 1 ton
- Packaging Details: Ep paper ,kraft ,pallet
- Delivery Time: 20days
- Payment Terms: T/T ,L/C
- Supply Ability: 100 000ton each month



Product Specification

- Product Name: Industrial Aluminium Profile
- Alloy: 6063,6061
- Material: Aluminum
- Surface Treatment: ,Anodized ,Electrophoretic Coated,Powder Spray Coated
- Deep Process: Milling, Drilling, Bending,Cutting
- Temper: T5, T6
- Highlight: **aluminum extrusion profiles,
aluminium door frame**

Product Description

Powder Painted Industrial Aluminium Profile Electrical Cover / Shell / Electronic Cover

Hentec Industrial Co.,Ltd is professional serves for Building doors and windows profiles, Railway, Cars with aluminum, IT computer , Communications, Electrical, Mechanical, High-speed rail transportation, Refrigerated containers etc., special aluminum profiles for 17 years.

- 1 Business type: Real Big Manufacturer & Exporter with 17years experience
- 2 Production Architecture Profile : GB 5237-2008
Standard: Industry Profile : GB/T6892-2008
- 3 Main applications :
Aluminum extrusion profiles for architectural & industrial,Different aluminum profile sections for different products .
Aluminum Formwork for Building Construction.
- 4 Product Main Mill finish,powder coating,anodized color,wooden pattern,Polyvinylidene Fluoride (PVDF)-Coating,Machine Finishes Polishing, Chemical Polishing, Mirror Polishing, Brushing Finish,thermal insulation of barrier strip,thermal insulation of filling-polyurethane
- 5 Price: Based on Guangdong Nanhai Lingtong Aluminium Ingot price +different finishes processing Fee + local cost
- 6 Payment term: T/T, L/C at sight
A. Alloy: 6063, 6060, 6061, 6005 etc
B. State: T5/T6
C. Length: 1m-13 m (polishing : 2.5 m)
D. Normal Anodizing thickness: 8-12 micro
E. Normal powder coating thickness: 60-100 micro
F. Tensile strength: ≥ 16 mpa
G. Yield strength: ≥ 110 mpa
H. Extensibility: $\geq 8\%$
I. Hardness(HW): ≥ 8
- 8 Packing: Kraft paper, EPE Fram, Shrink film, Carton Box,Wooden box etc,Customized package is available.
- 9 MOQ: 1X20 FCL ,Each profile not less than 500 kgs. Each color not less than 2 tons.
- 1 Sample 10-15 days after drawing confirmed and mold cost paid.
0 time
- 1 Delivery 35 days after deposit received.
1 time:
- 1 Port Shanghai Port
2

Surface treatment	
Power Coating Profile	As an environment-friendly high quality solvent-free decoration material,our power coated aluminium profile is characterized by excellent corrosion resistance,superior mechanical properties,impact resistance and fine flexibility,uncomparable by ordinary aluminium products,resistant to ultraviolet light,free from fading and influence from harsh weather,and lasting color and gloss
Wood Grain Profile	As a leading environment-friendly domestic building aluminium product,the wood-grain aluminium product contributes to modern home decoration.With all the advantages of centralized coated aluminium products,it has wood-like visual effects.It outweighs the wood products in terms of fireproof and thermal insulation and corrosion resistance.
Thermal-Break Profile	With sealed thermal and cold insulation performance,the thermal break aluminium product can significantly reduce energy consumption,in compliance with the requirements of the national energy-saving decree .It also has good characteristics to resist the erosion caused by harmful.
PVDF Profile	Our fluorocarbon coated aluminium profile is characterized by the smooth surface,uniform color,strongly resistant from high acid,alkali,impact and abrasion.It can withstand long-term strong ultraviolet radiation and acid erosion,free from coating chalking,fading and shedding.

Order,payment,terms,shipment

- 1, Minimum order: 500kg per trial order 1 piece of sample free of charge provided by approval and kept for future mass production.
- 2, Sample Lead Time: 25 working days(15 days for making the tool and 10 days making the samples. Before sending the samples to customer, samples should pass strict test in our lab.)Production Lead time: it depends on customers' order quantity (30 working days after deposit).
- 3, Payment: (Can negotiate with customers, our usual practices are as follow)
- 4, Tooling:100% prepaid by T/T.
- 5, Parts:30% upon order confirmation and balance before delivery by T/T

Applications:

Aluminum profile used in cars, trains machinery ,electronics, medical and other industrial filed . In terms of hardware, machinery, electromechanical parts, solar PV products, aluminum frames are adopt as important auxiliary materials. We also

have aluminum profiles for radiators, fitness machinery, buildings, lighting instrument, windpipes, oil pipelines, for instance.

FAQ For Saving Your Precious Time!

Q1: What's the thickness for anodizing?Can you do 15um?

A: Our normal thickness is about 10 um.Yes, we can do 15um and above.

Q2: What color you can do for powder coating?The thickness for powder coat?

A: We can do any color for powder coat as long as you can provide the color sample.Our normally powder coating thickness is 60-80um.

Q3: What color you can do for wood grain?

A:Our most popular colors are Western Red Cedar, Australia Cedar, Jarrah I, Jarrah II, Chestnut, Bush Cherry, Bush Wood, Western Wood, Snow Gum, etc.If you need any other colors, we can do according to the color samples you provide.

Q4: How's the weather resistance for wood grain finish D1010?

A: (1). Powder:Akzo Noble Interpon D1010.

(2). Wood grain film:Italian Memphis.

(3). Standard complied:American AAMA Standard.2603

(4). UV test:1000 hours.

(5). Salt spraying test:1000 hours.

(6). Normal weather:10 years color guarantee.

Q5: What certification do you have?What's your standard?

A:We have ISO certification.Our standard is DIN, AAMA, AS/NZS, China GB.

Q6: What's the delivery time for samples and mass production?

A: (1).2-3 weeks to make the new moulds and make free samples.

(2).3-4 weeks after receipt of deposit and confirmation of the order.



 **HENTEC** Hentec Industry Co.,Ltd

 +86-13861643436

 aluminum@hentec.com.cn

 aluminumextrusion-profiles.com

Qinfeng Road No.555 Huashi Town Jiangyin Jiangsu China (mainland) 214421