



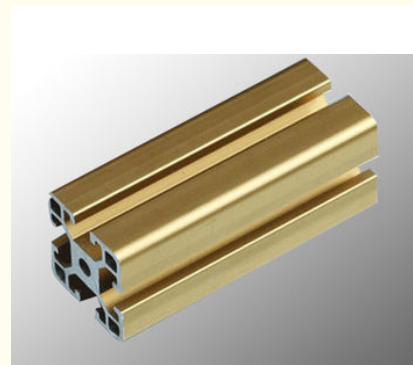
Anodized Industrial Aluminium Profile For Production Line , T Slot Aluminum Profile

Our Product Introduction

for more products please visit us on aluminumextrusion-profiles.com

Basic Information

- Place of Origin: China
- Brand Name: HT
- Certification: SGS
- Minimum Order Quantity: 1 ton
- Packaging Details: Ep paper ,kraft ,pallet
- Delivery Time: 20days
- Payment Terms: T/T ,L/C
- Supply Ability: 100 000ton each month



Product Specification

- Product Name: Industrial Aluminium Profile
- Alloy: 6063
- Material: Aluminum
- Surface Treatment: Powder Coated
- Deep Process: Cutting
- Temper: T6
- Highlight: **aluminum extrusion profiles,
aluminium extruded profiles**

Product Description

Anodized Industrial Aluminium Profile For Production Line , T Slot Aluminum Profile

1. Company with rich manufacturing experience

Hentec Industry Co., Ltd. is one of the leading aluminum manufacturer in China, with 10 years experience.

2. Production Management

Hentec Industry made complete quality management program and system, Monitor the process from product development, purchasement, production, sales and aftersale service.

3. Quality Supervision

Hentec Industry own complete testing equipment from raw material to finished products. We own the most powerful curtain wall testing base in China .

Description :

1. Material: 6063,6061,6060,6005,6005A,etc.
2. Temper: T5 or T6
3. Finish: Mill finish, anodizing, powder coating, electrophoresis, polishing, brushing, sand blasting
4. Various colors: Silver, bronze, black, gold, blue, grey, champagne, bright, etc.
5. Machining: Cutting, punching, drilling, tapping, milling, bending, welding, CNC etc.
6. Various in styles and sizes:
 - A) Aluminum alloy bars: 6063,6005,6061,6060, special materials such as 6082etc.
 - B) Aluminum profiles:
 - General aluminum profiles (various shapes of pipes/tubes, angles, T or U shapes etc.)
 - Industrial aluminum profiles (TV frames, Rim for bicycles and motorcycles, Heat sink profiles, Furniture, Ladder, Guide Rail, Leisure materials, Shower Room, Solar Module Frame, Motor Shell, Pipeline Integration etc.)
 - Construction aluminum profiles .
7. Certification: ISO9001,SGS,ROHS,TUV
8. Strong technical development ability, can provide high intensity and high ductility aluminum profiles, to meet customers' different requirements.
9. OEM service available, customized design available

Content	Specification
Aluminum Profile	from 20 series to 100 series
Fasteners-Nut	t nut, spring nut, slide nut, square nut, hex nut
Fasteners-Bolt	t screw, hex socket screw, cross socket screw, cylinder screw
Corner Bracket	1515 bracket, 2020 bracket, 3030 bracket, 4040 bracket, 4545 bracket, 5050 bracket, 2040 bracket, 3060 bracket, 4080 bracket, 50100 bracket
Decorative Parts	Slot cover, end caps, hangers, and etc
Casters/Support Feet	footmaster casters, adjustable stainless steel feet, and etc
Door and Window Accessories	door hange, door handle, slot cover, end caps, and etc
Aluminum Profile Frame/Rack/Cabint	AL protection frame for equipment, machine, conveyor, worktable, warehouse, and etc

Order,payment,terms,shipment

- 1, Minimum order: 500kg per trial order 1 piece of sample free of charge provided by approval and kept for future mass production.
- 2, Sample Lead Time: 25 working days(15 days for making the tool and 10 days making the samples. Before sending the samples to customer, samples should pass strict test in our lab.)Production Lead time: it depends on customers' order quantity (30 working days after deposit).
- 3, Payment: (Can negotiate with customers, our usual practices are as follow)
- 4, Tooling:100% prepaid by T/T.
- 5, Parts:30% upon order confirmation and balance before delivery by T/T

Drawing no	Drawing	SMM kg/m
HT-745		1.292
HT-746		0.786
HT-747		2.524
HT-749		0.464
HT-750		0.808
HT-751		1.616

Drawing no	Drawing	SMM kg/m
HT-752		1.646
HT-753		2.952
HT-754		2.015
HT-767		1.522

Applications:

Mainly used for industrial production , such as automation equipment , enclosure of the skeleton and the companies according to their own customized mold machinery and equipment , such as assembly line conveyor , hoist, dispenser, testing equipment, shelves , etc., electronic machinery industries and clean room with a gain majority.

Competitive Advantage:

1. 12 years' experiences of manufacturing, 10 years' exporting experiences .
2. STRONG R&D: Help customers finalize the design, strong tool design ability,excellent pressing and surface treatment technology.
3. Strict quality management: ISO Administration system.
4. 24 hours on-line communication.Professional, Patient, Flexible.
5. High capacity of manufacturing and wide range of products.
6. Be able to provide secondary fabricating.
7. Small order is accepted.
8. Be able to provide one-stop supply solution.